

Figure 2
2045 VOLUME AND CAPACITY DEFICIENCIES



TRANSYLVANIA COUNTY

CTP Analysis and Information

Volume and Capacity Ratio Features
 (Future Year 2045)

- 2045 Volume / 2045 Capacity: Under Capacity (0-0.79)
- 2045 Volume / 2045 Capacity: Near Capacity (0.80-0.99)
- 2045 Volume / 2045 Capacity: Over Capacity (1.00+)



Full report at:
<https://tinyurl.com/y5wy3fe3>



Sheet 2 of 2

Base map date: March 18, 2018

Legal Disclaimer

This product contains mapping data for informational and planning purposes only, and is subject to change. Users should review or consult the primary data sources to ascertain the usability of the information.

DRAFT WORKING MAP
 Plan Date: May 13, 2019

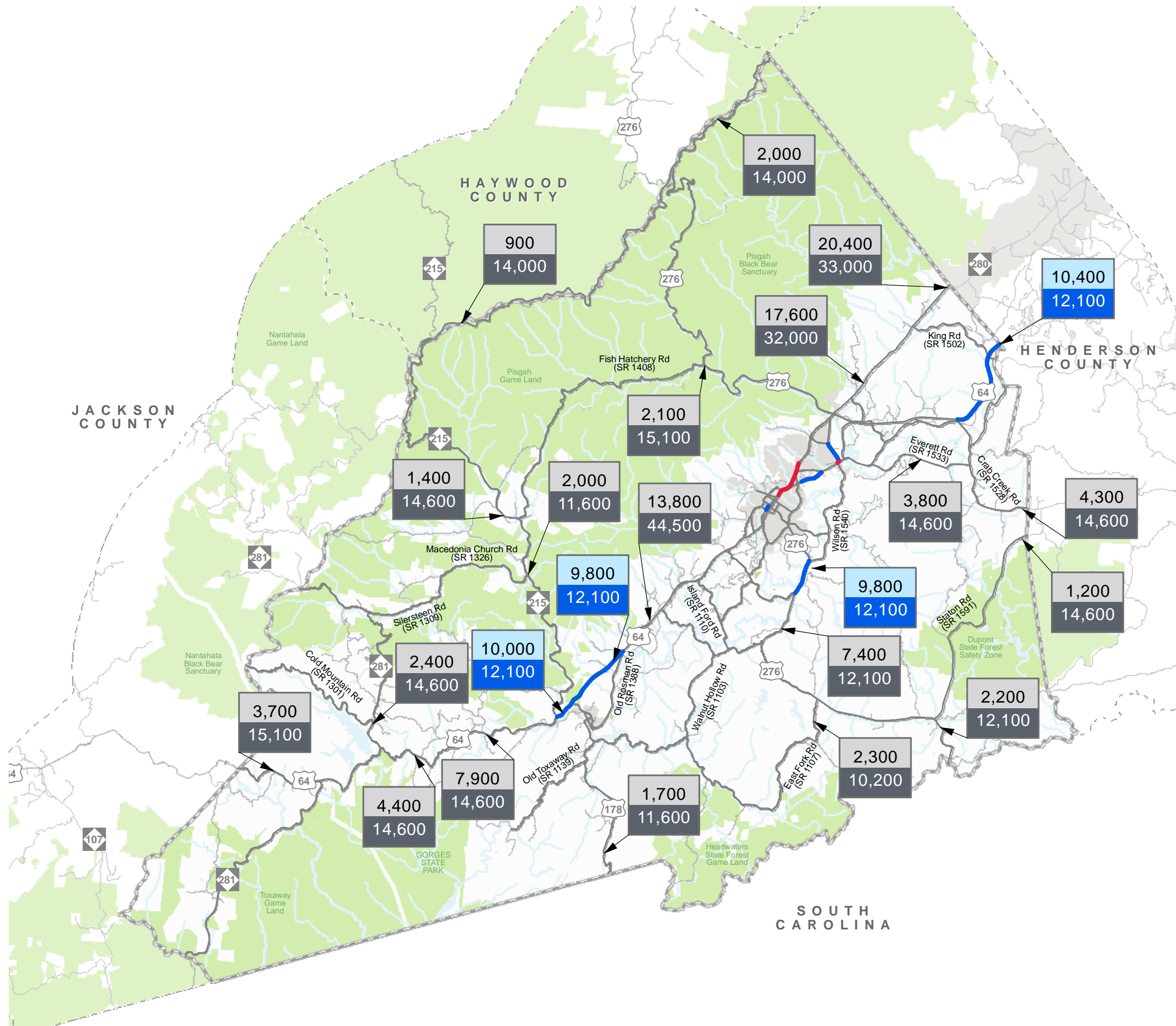
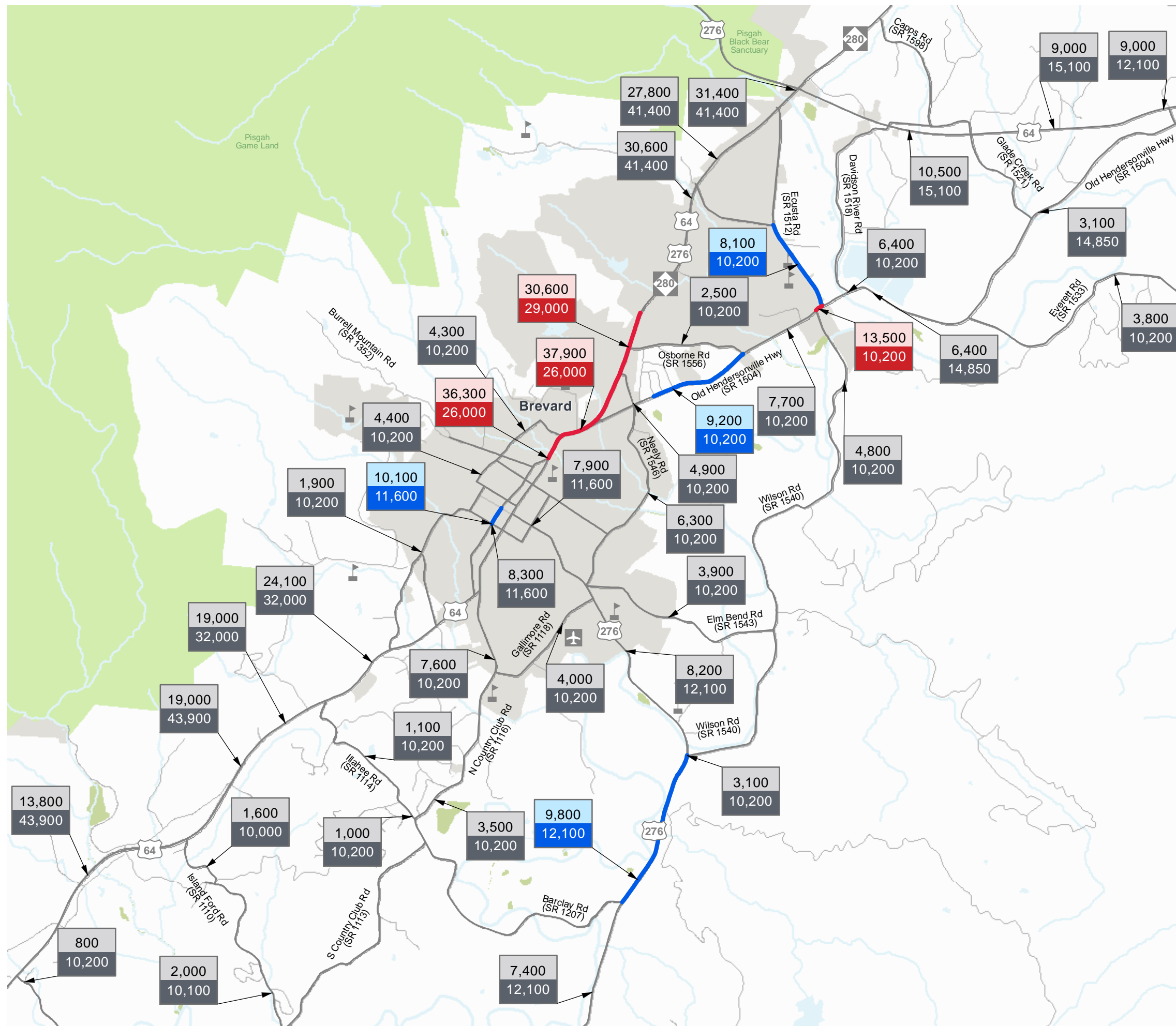


Figure 2
2045 VOLUME AND CAPACITY DEFICIENCIES



TRANSYLVANIA COUNTY
 CTP Analysis and Information

Volume and Capacity Ratio Features
 (Future Year 2045)

- | | |
|---------------|----------------|
| 2045 Volume | Under Capacity |
| 2045 Capacity | (0-0.79) |
- | | |
|---------------|---------------|
| 2045 Volume | Near Capacity |
| 2045 Capacity | (0.80-0.99) |
- | | |
|---------------|---------------|
| 2045 Volume | Over Capacity |
| 2045 Capacity | (1.00+) |



Full report at:
<https://tinyurl.com/y5wy3fe3>



Sheet 2 of 2

Base map date: March 18, 2018

Legal Disclaimer

This product contains mapping data for informational and planning purposes only, and is subject to change. Users should review or consult the primary data sources to ascertain the usability of the information.

DRAFT WORKING MAP
 Plan Date: May 13, 2019

FACILITY TYPES

Facility classifications for mobility and control of access planning through 2045



TRANSYLVANIA COUNTY

Comprehensive Transportation Plan Facility Types and Control of Access (Listed in Order of Mobility Function)

	Projected	New Location
Freeway		
Expressway (Multilane Divided)		
Boulevard (Multilane Divided)		
Major Thoroughfare (Multilane Undivided)		
Major Thoroughfare (2 Lane)		
Minor Thoroughfare		
Other Features		
	Studied Roads	



Full report at:
<https://tinyurl.com/y5wy3fe3>

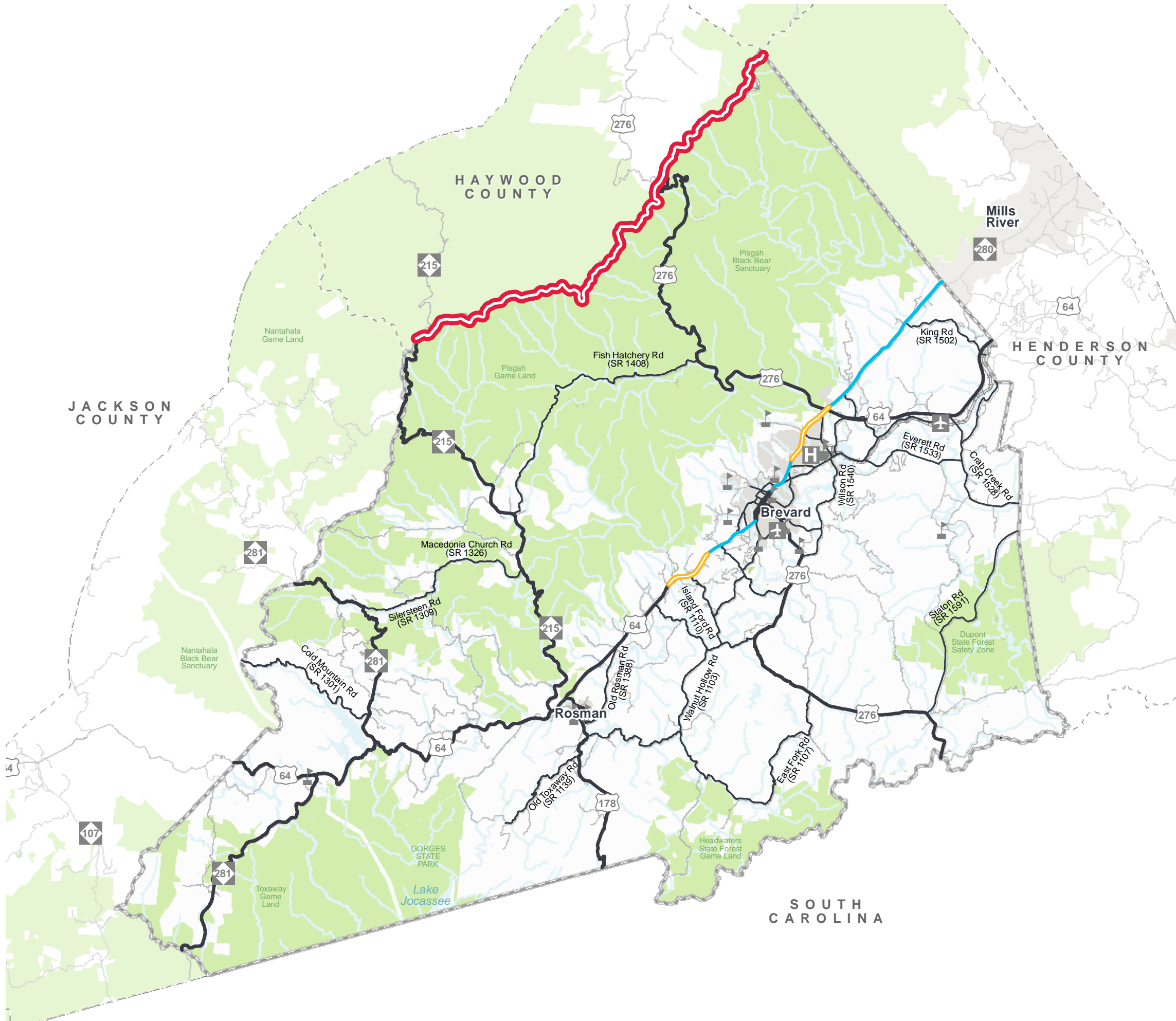


Sheet 1 of 4

Base map date: March 18, 2018

Legal Disclaimer

These concepts will need additional analysis to meet state and federal environmental regulations, to determine final locations and designs, and to be funded for implementation. Local zoning or subdivision ordinances may require the dedication of right of way based on the concepts shown on the Comprehensive Transportation Plan and local collector street plans, based on N.C.G.S. § 136-66.2 and § 136-66.10.



DRAFT WORKING MAP
Plan Date: May 11, 2019

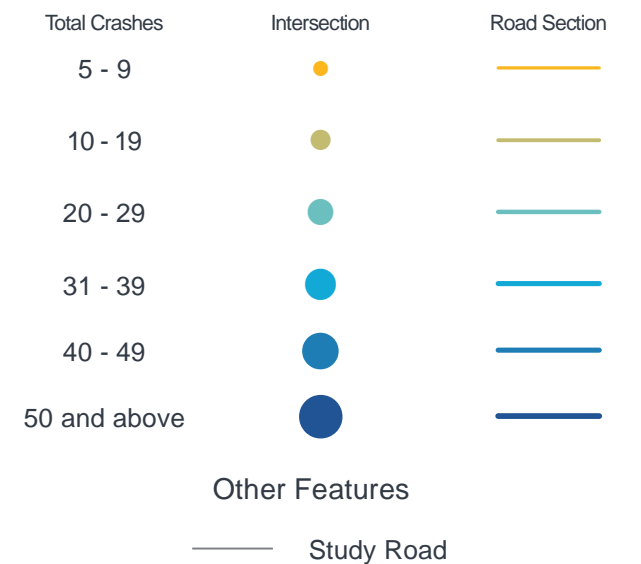
Figure 5
**HIGH FREQUENCY
 CRASH LOCATIONS**



**TRANSYLVANIA
 COUNTY**

CTP Analysis and Information

High Frequency Crash Features
 (January 2012 - December 2016)



Full report at:
<https://tinyurl.com/y5wy3fe3>

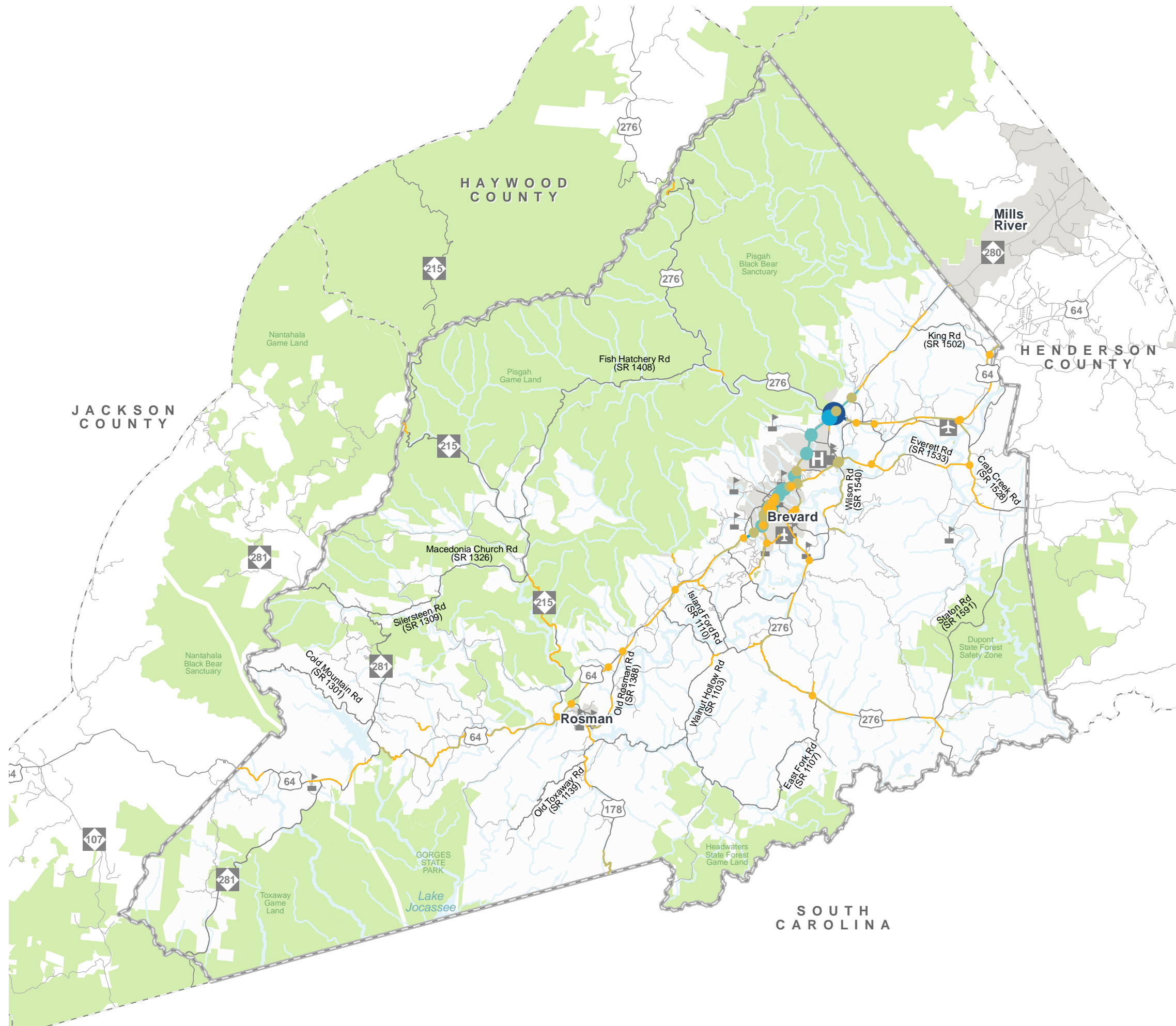


Sheet 2 of 4

Base map date: March 18, 2018

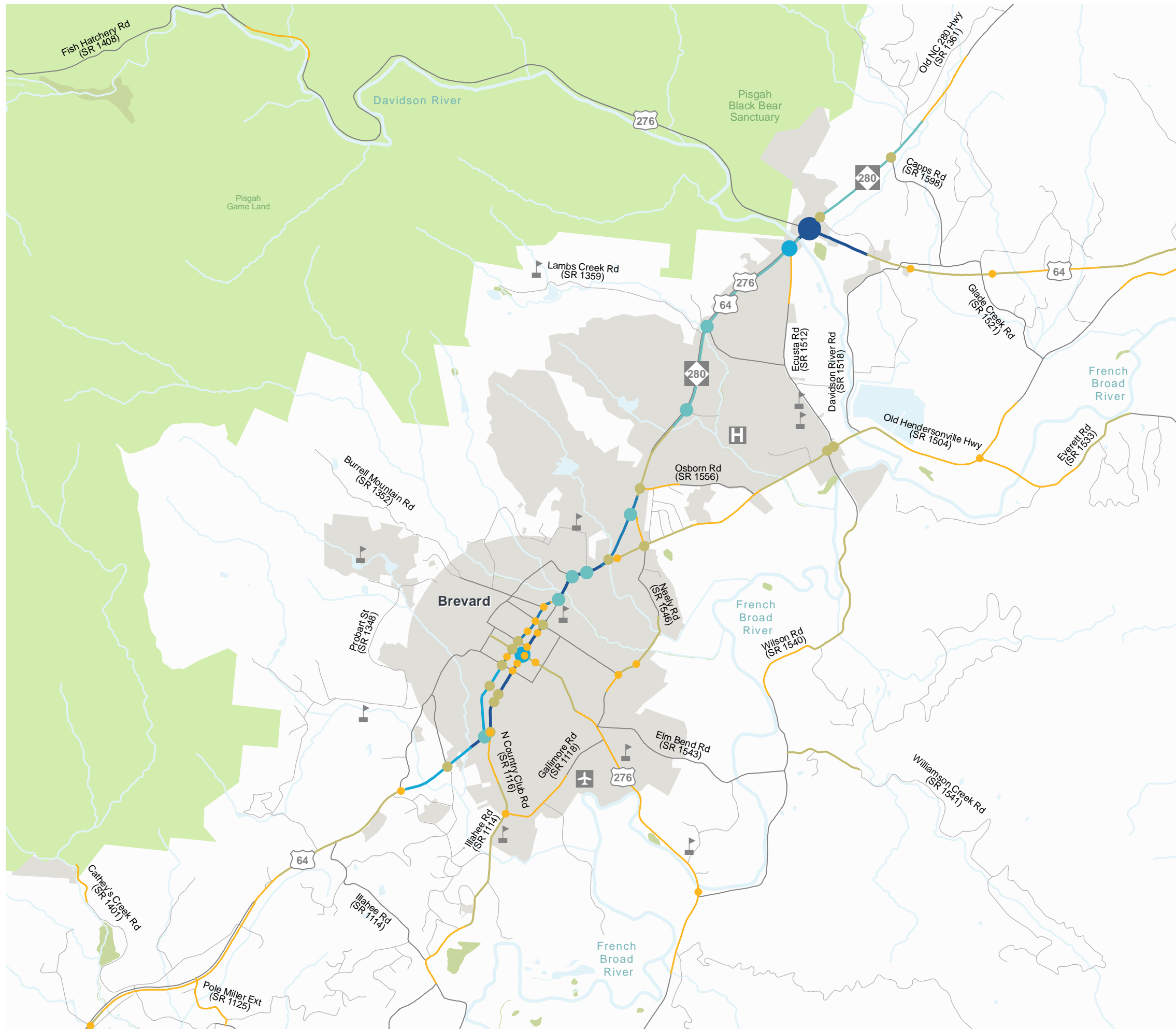
Legal Disclaimer

This product contains mapping data for informational and planning purposes only, and is subject to change. Users should review or consult the primary data sources to ascertain the usability of the information.



DRAFT WORKING MAP
 Plan Date: May 11, 2019

Figure 5
**HIGH FREQUENCY
 CRASH LOCATIONS**



**TRANSYLVANIA
 COUNTY**

CTP Analysis and Information

High Frequency Crash Features
 (January 2012 - December 2016)

High Frequency Crash Features
 (January 2012 - December 2016)

Total Crashes	Intersection	Road Section
5 - 9		
10 - 19		
20 - 29		
31 - 39		
40 - 49		
50 and above		

Other Features

Study Road



Full report at:
<https://tinyurl.com/y5wy3fe3>



Sheet 2 of 4

Base map date: March 18, 2018

Legal Disclaimer

This product contains mapping data for informational and planning purposes only, and is subject to change. Users should review or consult the primary data sources to ascertain the usability of the information.

DRAFT WORKING MAP
 Plan Date: May 12, 2019

Figure 3
Pedestrian Analysis



TRANSYLVANIA COUNTY

CTP Analysis and Information

Pedestrian Features

- Sidewalk —
- Multi-Use Path —
- Common Roadway —
- Bicycle and Pedestrian Bridge ○

Other Features

- Pedestrian Crash Location
- Destination
- Study Road



Full report at:
<https://tinyurl.com/y5wy3fe3>



Sheet 2 of 5

Base map date: March 18, 2018

Legal Disclaimer

This product contains mapping data for informational and planning purposes only, and is subject to change. Users should review or consult the primary data sources to ascertain the usability of the information.

DRAFT WORKING MAP
 Plan Date: May 12, 2019

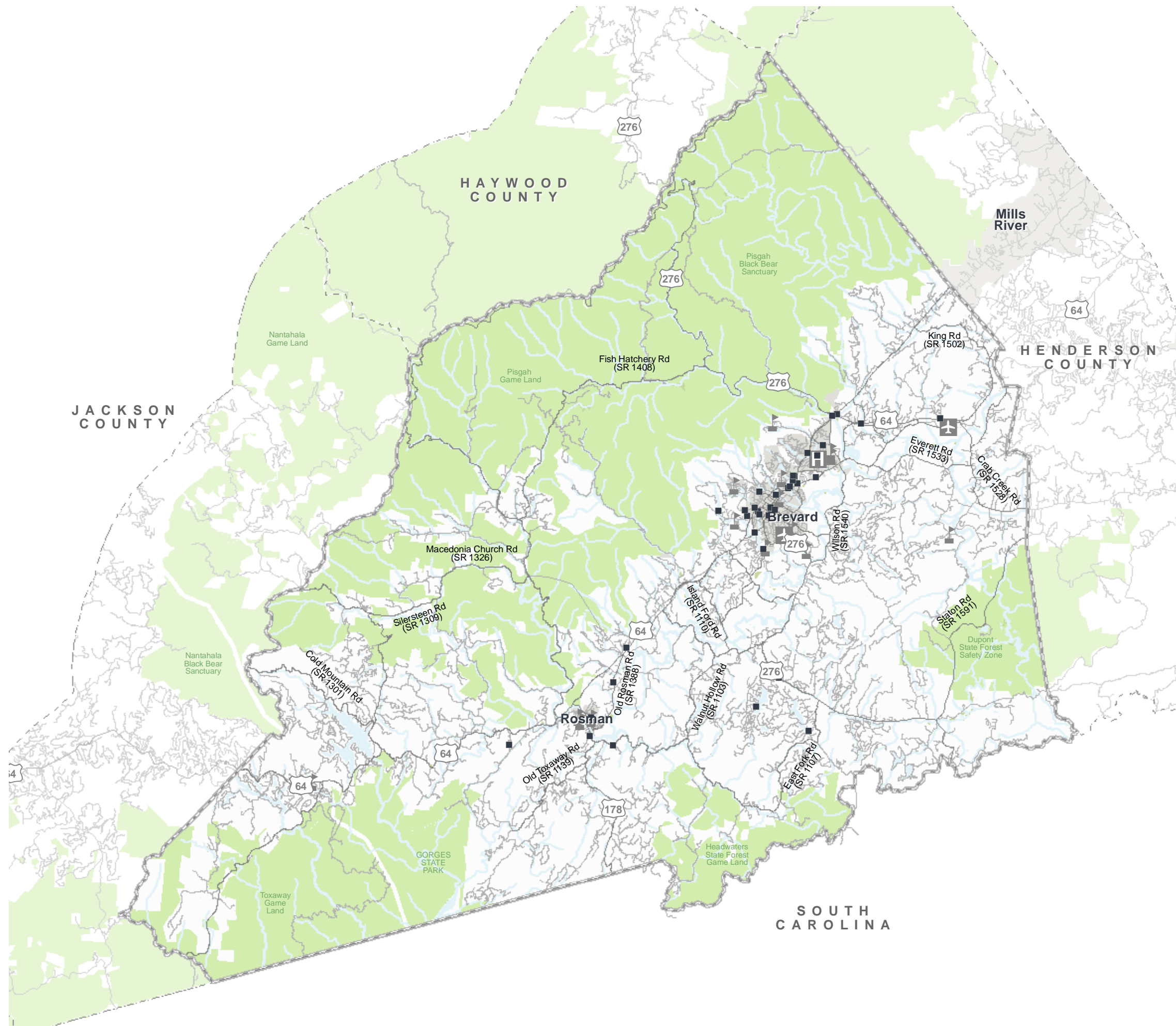


Figure 3
Bicycle Analysis



TRANSYLVANIA COUNTY

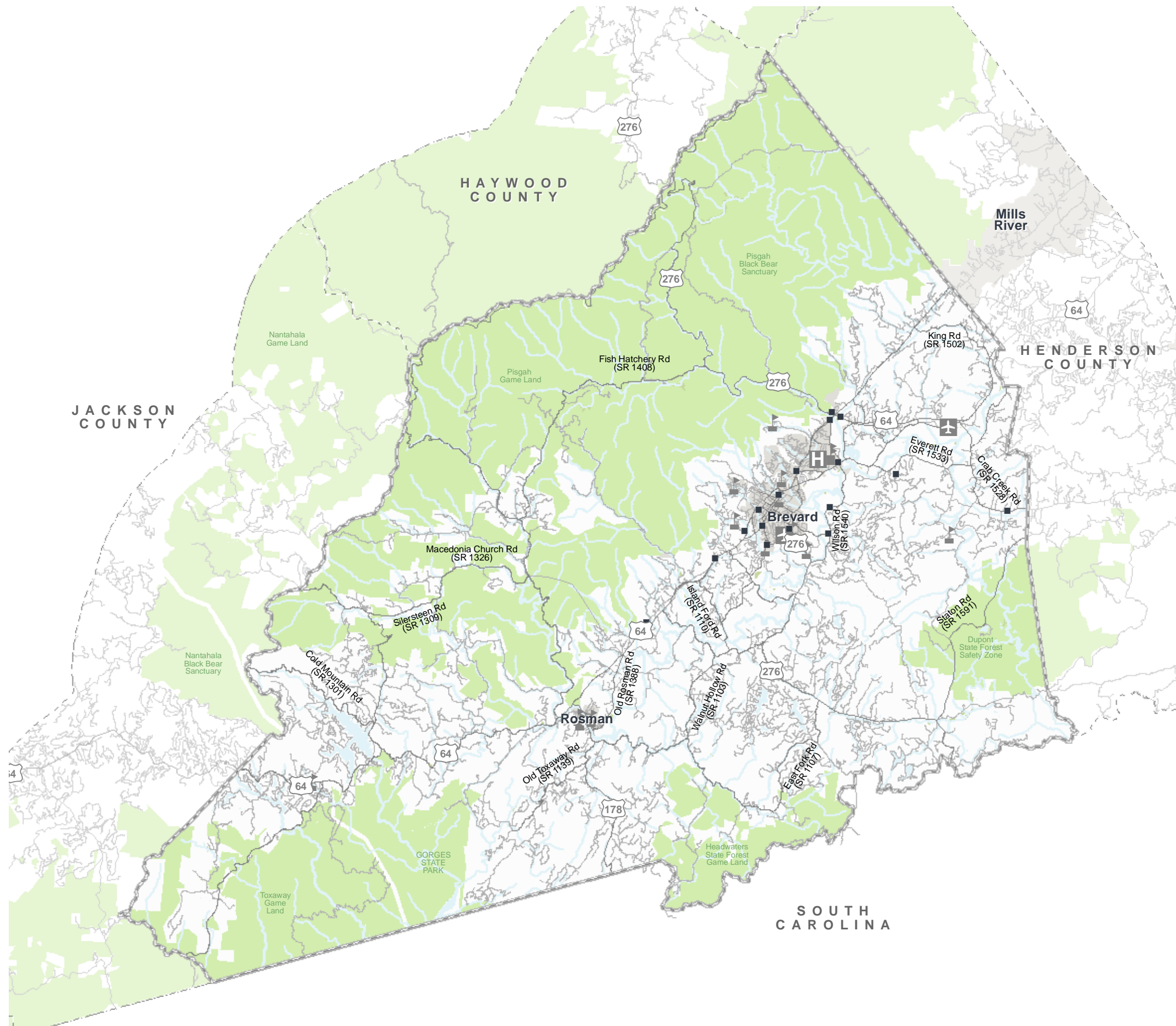
CTP Analysis and Information

Bicycle Features

- Bicycle Lane —
- Bicycle Route —
- Multi-Use Path —
- Common Roadway —
- Bicycle and Pedestrian Bridge ○

Other Features

- Bicycle Crash Location
- ➔ Destination
- Study Road



Full report at:
<https://tinyurl.com/y5wy3fe3>



Sheet 1 of 5

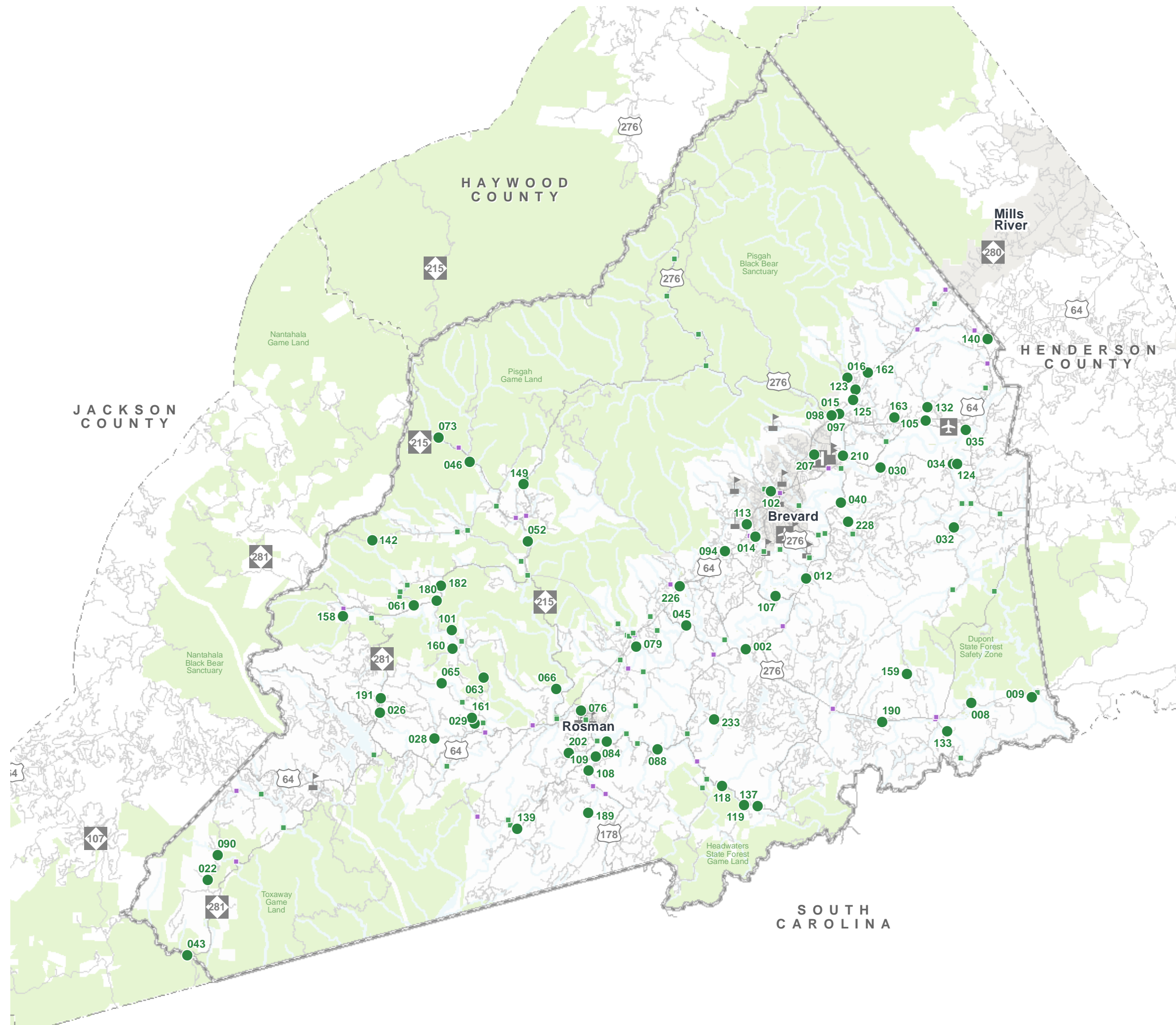
Base map date: March 18, 2018

Legal Disclaimer

This product contains mapping data for informational and planning purposes only, and is subject to change. Users should review or consult the primary data sources to ascertain the usability of the information.

DRAFT WORKING MAP
 Plan Date: May 12, 2019

Figure 6
BRIDGE DEFICIENCIES



TRANSYLVANIA COUNTY

CTP Analysis and Information

Bridge Features

- # Deficient Bridge
- Bridge
- Other Structure

Other Features

- Study Road



Sheet 3 of 4

Base map date: March 18, 2018

Legal Disclaimer

This product contains mapping data for informational and planning purposes only, and is subject to change. Users should review or consult the primary data sources to ascertain the usability of the information.

DRAFT WORKING MAP
Plan Date: May 11, 2019